



Affiniti 50

It understands your everyday

You always go above and beyond to provide the best care to your patients. But you are expected to do so with less time, fewer resources, and higher patient volumes. The care you want to provide deserves tools that can set you ahead and stay ahead.



Introducing Philips Affiniti 50

It understands your everyday

Engineered for efficiency and reliability, and powered by Philips proven performance, Affiniti 50 brings you outstanding image quality, advanced features, and walk-up usability.

All in an elegant, easy-to-use design with the broad applicability you need.

New Philips Affiniti 50

It understands your everyday.



Philips Affiniti 50

Workflow meets wow



**CONFIDENT
THROUGHPUT**

EXPERIENCE

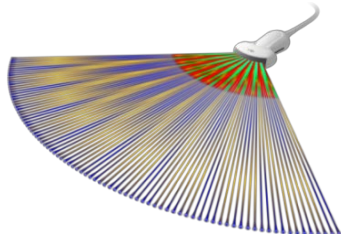
**TOTAL COST
OF OWNERSHIP**

Affiniti 50 for women's healthcare

A powerful combination of performance and workflow to help you make a quick confident diagnosis



CONFIDENT
THROUGHPUT



Transducer technology

C6-2, C9-4v, V6-2
L12-5, L12-4

Affiniti 50 precision beamforming

Delivers superb spatial and contrast resolution, **outstanding tissue uniformity, few artifacts, and reduced image clutter.**



Tissue-Specific Preset (TSP)

The combination of transducer optimization for specific exams, along with Affiniti 50 precision beamforming provide excellent image quality with **little or no need for image adjustment.**



All the capabilities needed for day-to-day applications, plus advanced features and automation that enhance exam efficiency and simplify workflow.

- **Elastography**
- **AutoSCAN**
- **SmartExam**

Philips Affiniti 50

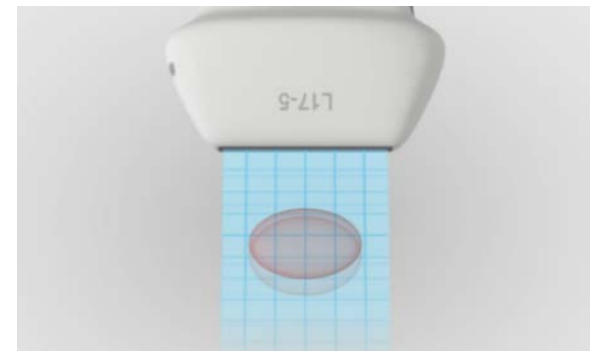
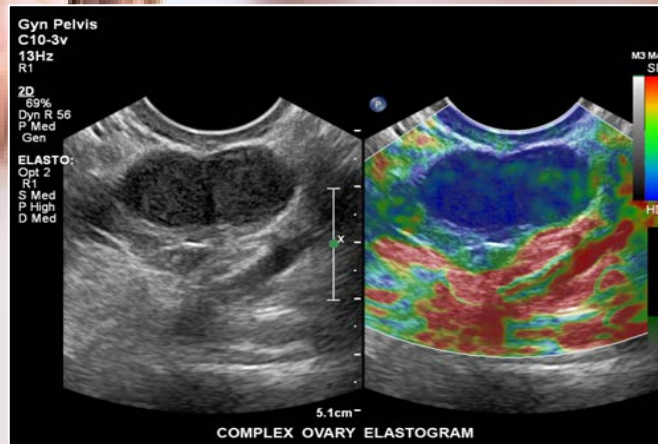
Elastography



CONFIDENT
THROUGHPUT

More definitive clinical information about tissue stiffness

Affiniti 50 supports highly sensitive strain elastography, which requires no external compression and can be used to assess relative tissue stiffness across a variety of applications including small parts, breast, and gynecology.



Strain elastography

Philips Affiniti 50



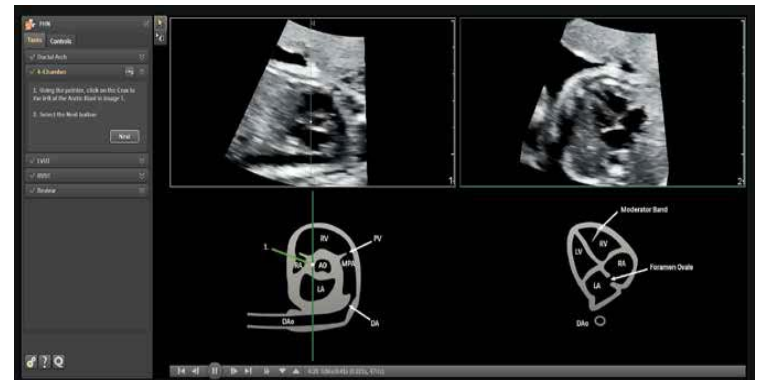
CONFIDENT
THROUGHPUT

3D Anatomical Intelligence

Automation designed to aid your workflow and increase your confidence in one of the most challenging exams—fetal heart.

Fetal Heart Navigator

- Once a STIC volume of data is acquired, FHN aids the clinician in locating the required views of the fetal heart
- The Fetal Heart Navigator will automatically align to the ductal arch view as a baseline for the other views; next, following a series of simple instructions and matching the 2D images to the schematics below for reference, the clinician can quickly obtain the next three views required by the ISUOG guidelines
- Philips Fetal Heart Navigator simplifies fetal heart exams to give users additional confidence in early anomaly detection, so your youngest patients can get the early intervention they need



Philips Affiniti 50

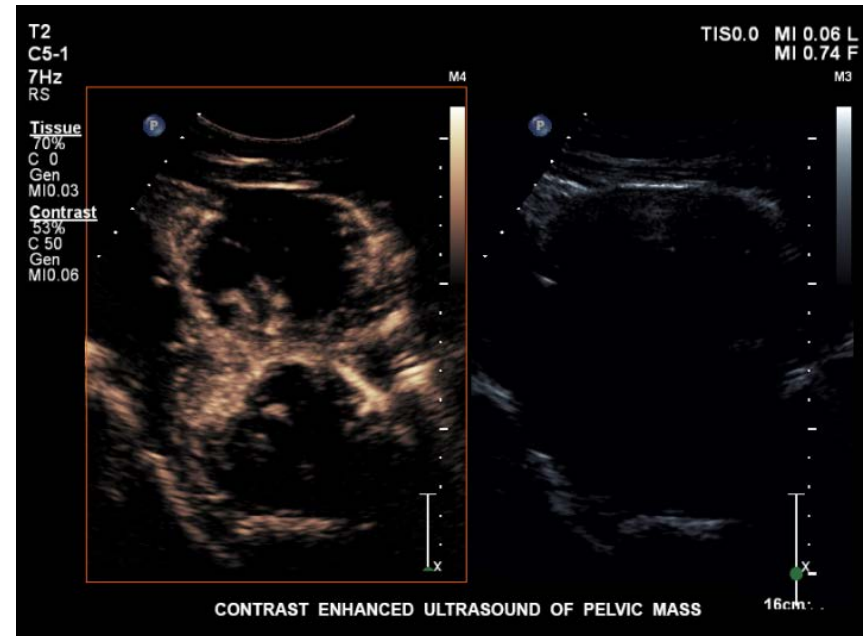
Contrast-enhanced ultrasound (CEUS)*



CONFIDENT
THROUGHPUT

Dynamic organ and tumor assessment in real time

With Affiniti 50, you can easily add contrast-enhanced ultrasound (CEUS) to nearly any exam. Affiniti 50 provides exceptional CEUS performance across multiple applications, which allows for dynamic assessment of organ and tumor perfusion in real time.



Philips Affiniti 50

Comfort meets competence



**CONFIDENT
THROUGHPUT**

EXPERIENCE

**TOTAL COST
OF OWNERSHIP**

Philips Affiniti 50

Designed around your everyday with walk-up usability, ergonomics, and mobility



EXPERIENCE



Walk-up usability

Users with ultrasound experience **require minimal training on system use to be able to complete an exam.**

Intuitive, tablet-like interface **reduces reach and button pushes.**



Ergonomics

180 degrees of articulation for the control panel and **largest in class 21.5" (54.6 cm) monitor** allow for scanning comfort.

Library quiet.

Easy-clip, our innovative cable management solution, keeps cables **tangle- and damage-free**, while decreasing cable strain for improved comfort while scanning.



Mobility

One of the **lightest in its class**, at just **184 pounds (83.5 kg)**, Affiniti 50 can be easily transported.

Wake the system from **sleep mode** and start scanning in just seconds.

Philips Affiniti 50

A smart investment



**CONFIDENT
THROUGHPUT**

EXPERIENCE

**TOTAL COST
OF OWNERSHIP**

Philips Affiniti 50

Reliability, sustainability, and support services to enhance your ownership experience



TOTAL COST
OF OWNERSHIP



Enhanced serviceability and durability

Affiniti 50 features a **modular design** for enhanced reliability, rapid repair, and enhanced system **uptime**.

The system is built to last for the daily rigors of high patient volume with 4,500 hours of **rigorous system testing**.

Support services*

Predictive service models such as proactive monitoring and remote desktop, etc. provide high system availability and enhanced workflow.

Service support, financing programs, and educational offerings give you peace of mind to get the most out of your system.

Energy-efficient

Affiniti 50 **consumes less energy than a toaster, and may help you save on energy and cooling costs.**

It consumes nearly 60% less energy than its predecessor.



Philips Affiniti 50

It understands your everyday.

PHILIPS

