



PHILIPS

Ultrasound

Ob/Gyn

The face they're longing to see

TrueVue, GlassVue and aReveal^{A.I.} on EPIQ and Affiniti ultrasound

Let the **light** shine in

TrueVue, with its virtual light source, is a proprietary advanced 3D ultrasound display method that delivers amazing lifelike 3D ultrasound image and gives the operator the ability to move the light source anywhere in the 3D volume. aReveal^{AI} is an intelligent workflow tool that automatically – with just the push of a button – removes unwanted data around the 3D fetal face. TrueVue and aReveal^{AI} are part of an easy exam that is driven by intuitive 3D image display and automated workflow, so you can focus on your patient rather than the system. These advances are designed to enhance workflow and aid in maternal-fetal bonding.

TrueVue's presentation is more "lifelike" than traditional rendering algorithms



Traditional 3D rendering



TrueVue applied

Real life, illuminated

The TrueVue virtual light source can be placed anywhere within the acquired 3D volume. This flexibility allows the user to manipulate light and shadow on anatomical structures to enhance clinical confidence and may foster maternal-fetal bonding.

With TrueVue, a moveable light source illuminates 3D volumes internally or externally.



Light source in umbilical cord



Light source upper right



Light source lower left

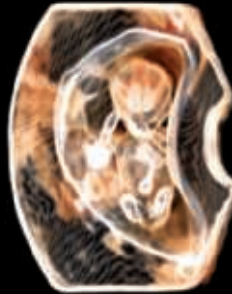


Light source lower right

An early view

GlassVue goes beyond the surface to reveal bone, organs, and other internal structures.

GlassVue, with internal light source, provides an early, more transparent view of the fetal anatomy than traditional ultrasound.



One touch to reveal

No longer is it a time-consuming process to reveal the fetal face. aReveal^{AI} is a Philips AIUS algorithm that automatically sculpts away data around the fetal face by recognizing the geometry of the skull. One touch reveals the face and one touch reverses the process. aReveal^{AI} works with both TrueVue and traditionally rendered 3D volumes.

aReveal^{AI} is an advanced feature of Philips AIUS that removes extraneous information to quickly and easily reveal the fetal face.



Before aReveal^{AI}.



After aReveal^{AI} applied

AIUS turns data into information

Anatomical Intelligence Ultrasound (AIUS) looks at a patient's ultrasound data and applies adaptive system intelligence using 3D anatomical models to create easier and more reproducible results.



© 2017 Koninklijke Philips N.V. All rights are reserved.
Philips reserves the right to make changes in specifications and/or to discontinue any product at any time without notice or obligation and will not be liable for any consequences resulting from the use of this publication. Trademarks are the property of Koninklijke Philips N.V. or their respective owners

Please visit www.philips.com

Printed in The Netherlands.
4522 991 23451 * MAR 2017