



# A new class of compact echocardiography

Philips CX50 CompactXtreme ultrasound system

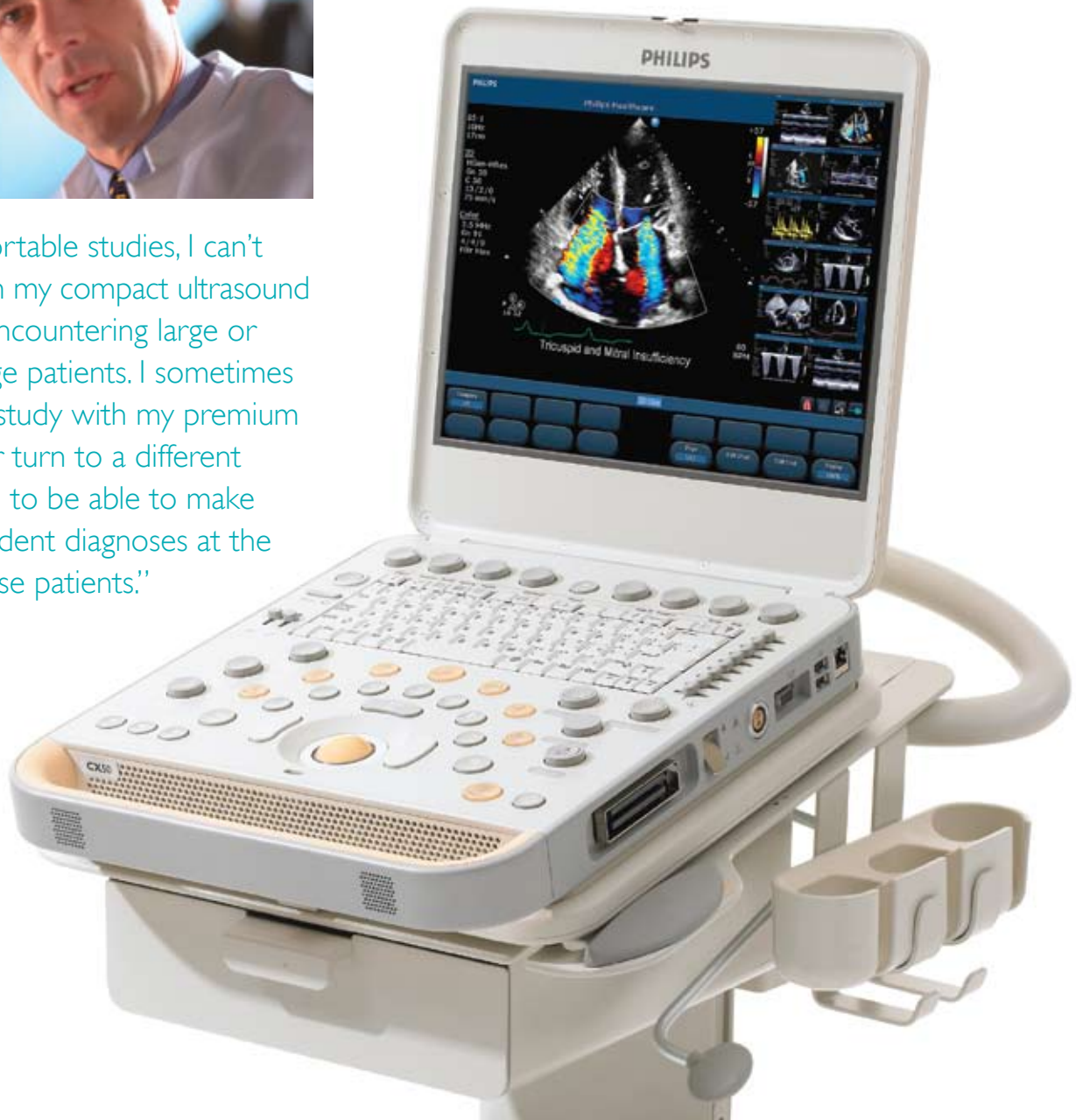
**PHILIPS**

# Introducing the Philips CX50

Now you can be confident in the data from your exams, including your most technically challenging studies. Philips, a leader in cutting-edge ultrasound development, has integrated premium, innovative technologies into the new CX50 system to address the need for premium class performance in a compact echo system.



“While doing portable studies, I can’t always count on my compact ultrasound system when encountering large or difficult-to-image patients. I sometimes must redo the study with my premium echo system, or turn to a different modality. I need to be able to make quick and confident diagnoses at the bedside for these patients.”



# CompactXtreme system



## Bedside

The compact size of the CX50 allows you to have premium performance for your portable exams. Easily perform cardiac and vascular exams at the bedside, and take advantage of premium image quality for your critically ill patients.



## OR

The CX50 system's portability means you can have premium performance TEE in the surgical suite.



## CCU

Because of its premium image quality, the CX50 system is the ideal choice for imaging your critically ill patients. Its lightweight, small, and highly mobile cart allows you to easily maneuver in the confined CCU environment.

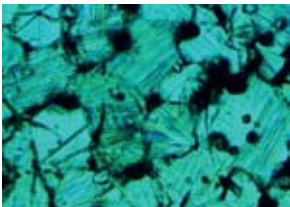
# Premium class performance in a compact echo system

Extreme performance is built into the CX50 system with clinically proven premium technologies. Images are displayed with exceptional clarity, giving you the data you need for confident diagnoses.

## PureWave goes portable

PureWave technology, previously available only on the Philips iE33 system, has been integrated into the new CX50 CompactXtreme system. Clinicians can rely on improved far field resolution and the ability to image a wide variety of patients with one transducer.

PureWave technology is the biggest breakthrough in piezoelectric transducer technology in 40 years, providing a radical leap forward in compact image quality. Since 2004, over a million exams have been performed using PureWave technology, and now it's adding premium quality to portable studies.



Conventional



PureWave

As you can see (800X magnification), PureWave crystals have virtually perfect uniformity for greater bandwidth and twice the efficiency of conventional ceramic materials. The result is excellent imaging and Doppler performance on your patients, especially the technically difficult.

## Digital broadband beamforming on a compact

The CX50 combines the broadband capabilities of a digital beamformer with the broadband signals produced by PureWave transducers. For the first time in a compact system, complete tissue signatures are captured, preserved, and displayed. The level of image quality is exceptional, allowing you to fully appreciate subtle anatomical details.

## SonoCT and XRES technologies bring a new level of clarity to compact ultrasound

Philips SonoCT is a clinically-proven premium technology that acquires up to 9 lines of sight and combines the individual images into one clear well-defined image in real time. SonoCT displays striking levels of tissue differentiation that are virtually free of artifact.

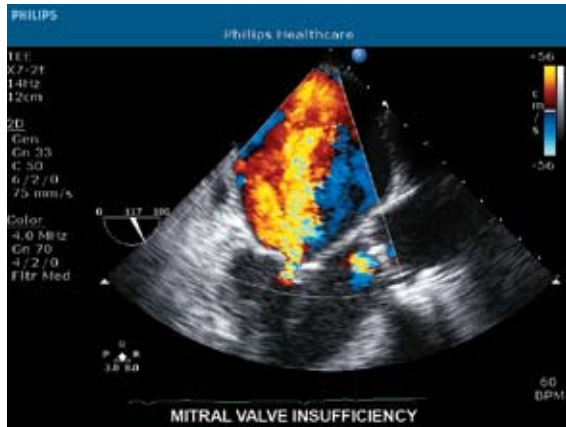
Advanced XRES adaptive image processing reduces speckle, haze and clutter, resulting in images virtually free from noise with extraordinary clarity and edge definition. When SonoCT and XRES work in tandem, even the subtlest of diagnostic features are enhanced, making it even easier to achieve high clinical accuracy in portable studies.

## New transducer family supports cardiac and vascular applications

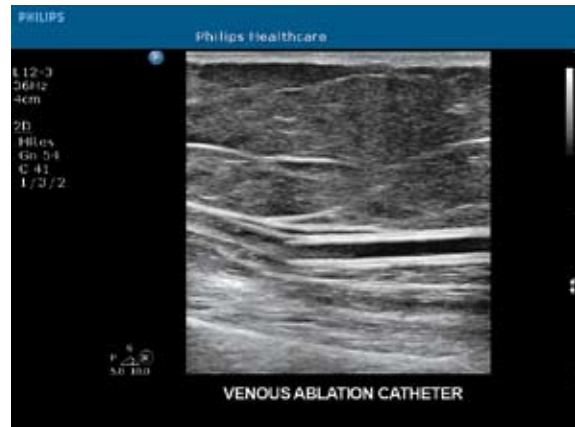
PureWave is now available for adult echo and deep abdominal vascular studies with the addition of the C5-1 transducer. You'll experience excellent image quality with the C5-1 even on your most difficult patients. As well, the L12-3 linear array provides superb access and results on superficial vasculature.



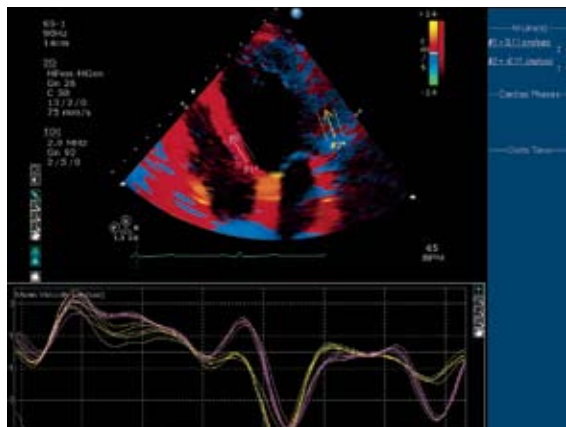
The S5-1 and X7-2t PureWave transducers support exceptional 2D imaging and Doppler performance for adult echo exams. The C5-1 PureWave curved array and L12-3 linear array transducers add vascular capabilities to portable studies.



Transesophageal imaging of this mitral insufficiency with the X7-2t transducer demonstrates the excellent color filling and Doppler sensitivity.



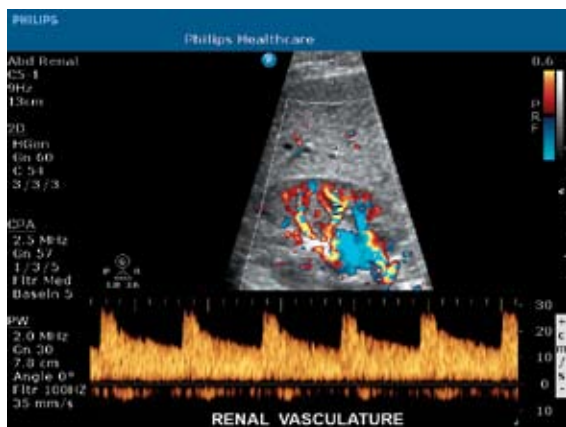
The resolution detail of the ablation catheter and surrounding tissue captured with the L12-3 linear array transducer provide exquisite visualization during this venous ablation procedure.



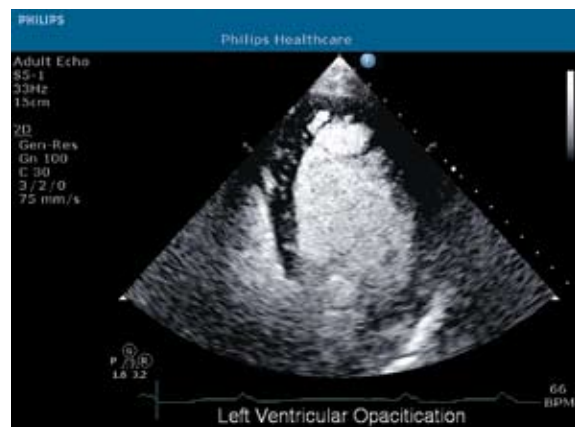
Tissue Doppler imaging (TDI) with the QLAB Strain Quantification (SQ) plug-in depicts the velocity curves of the lateral basal segment.



The S5-1 transducer and Color Compare mode show color sensitivity with a depth setting of 24 cm. Note the color flow crossing the atrial septal defect.



The C5-1 transducer with PureWave technology provides extraordinary sensitivity as seen in this renal vasculature.



This image of left ventricular opacification (LVO) shows uniform contrast filling from apex to base along with endocardial border detail.

# Premium compact echo

The CX50 system adapts to your workflow, whether you're in the CCU, at the bedside, or at a remote location. With easy-to-use tools designed for your needs, you're ready to scan wherever your patients are located.

## Breakthrough workflow solutions

### Portable exams become easy with simple one-button controls

The CX50 is designed to make portable exams easy and efficient. With a single button, iSCAN technology automatically samples data for quick optimization for 2D and Doppler performance. To increase efficiency and diagnostic confidence, the CX50 incorporates the latest 3D freehand acquisition to enable advanced volume workflow studies.



One-button controls are logically placed on the CX50 control panel for quick selection and optimization during every exam.

### Reduce exam time by up 50% with SmartExam

SmartExam protocols are easy-to-use customizable guides that help you perform complete studies on every patient. The on-screen menu guides you through the required views for a specific exam type, automatically enters annotation, and builds your report. Save time, reduce repeated moves, and increase efficiency and consistency of exams.

## Compact ultrasound designed for your environment

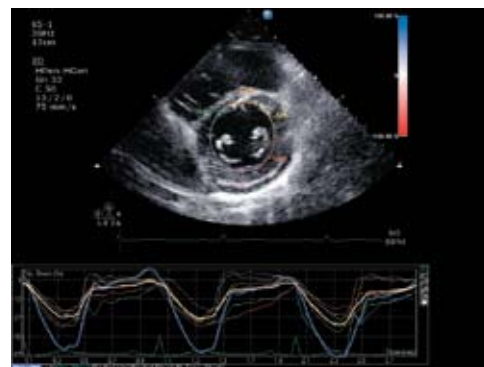
The CX50 system features a high resolution monitor for optimal viewing in the most difficult portable environments, and fast system start-up allows you to quickly begin your studies. Wireless and wired DICOM allow flexibility when connecting to your PACS. You can also export your data by DVD and USB media with integrated DICOM viewer.

## Fine-tune exams with active native data

The CX50 system stores active native acoustic data giving you the ability to adjust virtually all scanning parameters on single images, clips or stored 2D and Doppler data. Images can be readjusted during or after the exam, enhancing diagnostic details, allowing for shorter exam times, and reducing the need for repeat studies.

## Expand diagnostic information with QLAB quantification software

The CX50 offers quantitative assessment of cardiac anatomy and function using clinically proven QLAB software. Tissue Motion Quantification (TMQ) with speckle tracking technology, Strain Quantification (SQ), Intima media thickness evaluation (IMT), and Region of Interest (ROI) plug-ins are supported.



TMQ offers a suite of measurements to analyze transmural myocardial mechanics without tissue Doppler imaging angle dependency limitations.

# everywhere you need it

The CX50 offers a wide range of portability options. Take it where you need it—throughout the hospital and to remote sites. With its cart, travel case and hand-carry portability options, you have the freedom to scan everywhere.



## On cart

The CX50 cart allows for easy mobility and effortless maneuverability throughout the hospital. The system and cart are combined ergonomically into one unit that is slim, lightweight and height adjustable. It can be swiveled and locked so you are set up quickly everywhere you need premium performance. It's the solution for your patient exams in confined areas, such as the CCU and bedside.



## Hand carry

For situations that call for the ultimate in portability, the CX50 is a fully functional laptop-sized ultrasound system with an integrated handle for easy carrying. Now you can navigate with a new level of utility, and take premium performance where fast responses are needed.



## Remote travel

The CX50 system is the ideal solution for multiple-site support. With its convenient travel case, you can easily take the CX50 to distant clinical locations. Now clinical staff can support satellite offices, screening events, and mobile services with premium imaging.

Our portfolio of services is as innovative, flexible and comprehensive as your Philips system. From consulting in preparation, installation and networking, to providing clinical and biomedical engineering training, education and e-learning, to sourcing financial options, we have the expertise to assist you in finding the best solution for your specific needs.

#### **World class customer service**

Philips Customer Service agreements deliver the flexibility and choice you need to provide patient care based on the latest advances in system technology, successfully manage your financial performance, promote uptime, lower the cost of ownership, and increase your productivity. Philips delivers the full spectrum of services quickly through dedicated, highly trained clinical and technical specialists focused on providing unparalleled customer service. Year after year, customers rank Philips Ultrasound #1 in overall service performance—check the web for details: [www.healthcare.philips.com/ultrasound](http://www.healthcare.philips.com/ultrasound)

#### **Bringing expertise and vision to your ultrasound education**

Philips offers a wide array of clinical and technical education, online resources and training courses to meet the increasingly complex needs of healthcare professionals and staff members. Whatever your need, there is a medical education course or resource available that is specifically tailored to fulfill the learning requirements of you and your organization.

#### **Innovative financial solutions**

Philips Medical Capital delivers flexible financial solutions to place state-of-the-art Philips medical products in healthcare facilities around the world. Our financial experts understand your unique financial needs and provide flexible solutions that optimize asset utilization, reduce costs, and increase financial flexibility.

#### **Partnering to provide security solutions**

Philips is committed to addressing your privacy and security concerns. Your partner in prevention, response and compliance, Philips Product Security provides online security resources, answers to security-related questions, and access to dedicated security professionals who can assist with your IT department's compliance efforts and risk assessments.

Check our web site to catch the new wave in compact echo:

[www.philips.com/catchthewave](http://www.philips.com/catchthewave)



© 2008 Koninklijke Philips Electronics N.V.  
All rights are reserved.

Philips Healthcare reserves the right to make changes in specifications and/or to discontinue any product at any time without notice or obligation and will not be liable for any consequences resulting from the use of this publication.

Philips Healthcare is part of Royal Philips Electronics

[www.philips.com/healthcare](http://www.philips.com/healthcare)  
[healthcare@philips.com](mailto:healthcare@philips.com)  
fax: +31 40 27 64 887

Printed in the USA.  
4522 962 44701/795 \* MAR 2009

Philips Healthcare  
Global Information Center  
P.O. Box 1286  
5602 BG Eindhoven  
The Netherlands