

AMANDA

cod. 415

Lemi
ITALIAN WELLNESS EQUIPMENT

CLASSIC



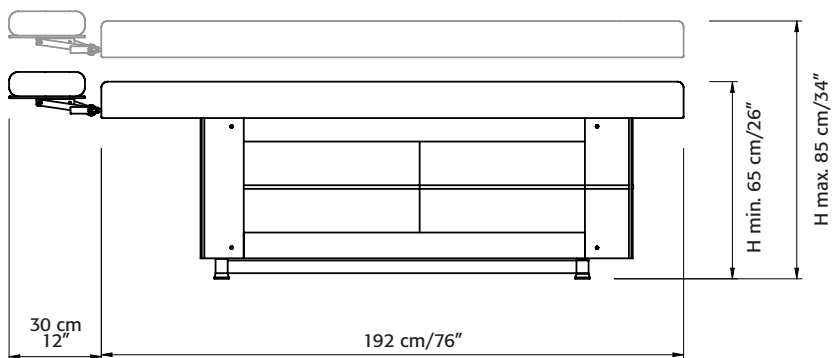
Focus on

- 3 electric motors for height, backrest and legrest adjustment
- Mattress with American headrest
- Wooden base with storage
- An ideal solution for multi-room structures
- Maximum client/practitioner comfort

Focus on

- 3 motori elettrici per regolazione di altezza, schienale e gamba
- Materasso con Testa Americana
- Base in legno con ampio vano
- Soluzione ideale per cabine multifunzionali
- Massimo comfort cliente/operatore

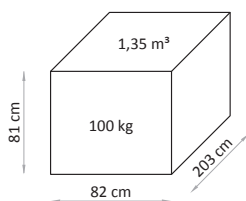
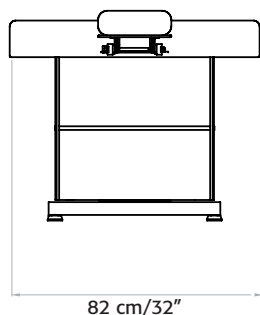
Dimensions / Dimensioni



Finishing / Finiture



- Tessuto tabacco T03
- Tessuto nocciola T02
- Pino itaca grigio P46
- Pino itaca bianco P45
- Ciliegio C19
- Rovere naturale R32
- Rovere sbiancato R40
- Wenghé X53
- Nero U79
- Bianco pesante U16



SPA PRESTIGE COLORS



9916



1424



1423



1422



2202

COLORI SPA PRESTIGE



2204



7022



7023



1875

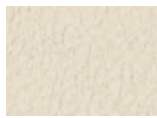


1530

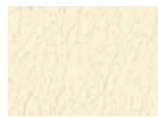
NEFOS COLORS



6



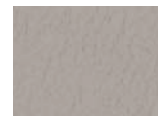
1155



1182



1957



6985



3962



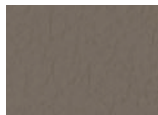
2124



2146



1194



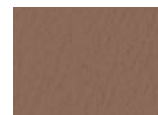
6986



64



71



2173



1388



667



680



569



1843



1868



6942



6941



5946



6940



4942



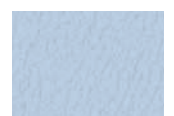
1305



991



8009



8019

COLORI NEFOS

ACCESSORIES UPON REQUEST



cod. 078
Arm support
Appoggiabraccia



cod. 114 P
Oil-Resistant Mattress protection with polyurethane
Materasso Oil-Resistant in poliuretano



cod. KIT CROMO
Lemi Color therapy
Kit cromoterapia



cod. SOUND BT SPA
Bluetooth sound system
Sistema bluetooth



cod. KIT AROMA SPA
Aromatherapy by Camylle
Aromaterapia by Camille



cod. LEM-179
Wireless foot pedal control (NO foot pedal with cable and NO remote control can be fixed)
Pedaliera wireless
(NON compatibile con il pedale a filo e con la pulsantiera)



cod. 155 NEW SOFT-M
Extra comfort mattress with memory foam
Materasso extra comfort con memory foam



cod. 108 VR XL
Roll holder (75 cm)
Portarotolo

ACCESSORI SU RICHIESTA



cod. LEM-084
Handset control
Pulsantiera



cod. 180 VR
Heating system
Riscaldamento



cod. 077/A
Cushion without face hole
Testa americana senza foro



cod. 0014
Hot towel Cabbi
Scalda salviette



cod. 196
Easy-Move system with integrated wheels
Sistema ruote Easy Move



cod. GOP 020
Vario Led Flex lamp
Lampada Vario Led



cod. GOP 020 A
Clamp for Vario Led Flex lamp
Attacco per lampada Vario Led

	voltaggio <i>voltage</i>	frequenza <i>frequency</i>	assorbimento <i>absorption</i>	warranty	garanzia
AMANDA	230/110V ac	50/60 Hz	0,70-1,5 Amp	<i>structure: 5 years motors and controls: 2 years undeformable foam: 5 years heating: 1 years</i>	struttura: 5 anni motori e controlli: 2 anni gomma indeformabile: 5 anni riscaldamento: 1 anno

REGULATIONS

All Equipment is **CE** marked

Electrical equipment and beds

Directive 2006/42/CE (Machinery Directive) and national regulations | Directive 2004/108/CE (Electromagnetic Compatibility Directive) and national regulations

NORME

Tutte le attrezzature sono a marchio **CE**

Attrezzature e lettini elettrici

Direttiva 2006/42/CE (Direttiva Macchine) e disposizioni nazionali di attuazione | Direttiva 2004/108/CE (Direttiva Compatibilità elettromagnetica) e disposizioni nazionali di attuazione