

The seal of the University of Crete, featuring a seated female figure holding a staff and a laurel wreath, with the Greek text 'ΕΡΕΥΡΑ ΠΡΟΤΗ' around the perimeter.

INFRASTRUCTURE & DIGITAL/WEB SERVICES

January 2014

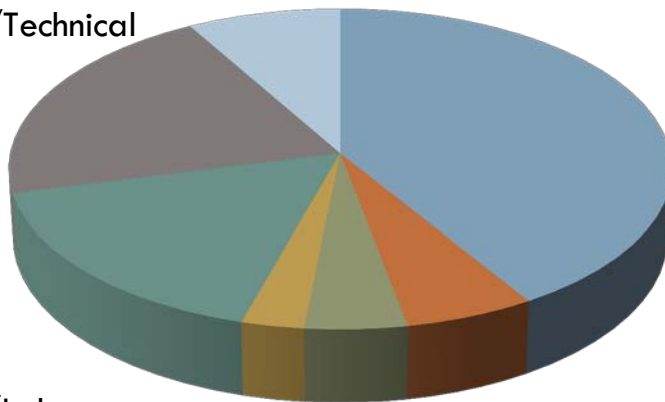
Periklis Drakos, *Specialized Laboratory Teaching Staff*

Kostis Pigounakis, *Specialized Laboratory Technical Staff*

Spaces

Total Space of Exclusive Use: **700 m²**

- Teaching Staff
- Secretariat/Technical
- Researchers
- PostGrads
- Communal
- Classrooms/Labs
- Head/Meeting



- **285 m²** Teaching Staff Offices (**13m²/person**)
- **40 m²** Secretariat (**11m²/person**) – Technical Staff (**7m²**)
- **30 m²** Researchers' Offices* (**1.5m²/person**)
- **20 m²** Post Graduates Room (**1.0m²/person**)
- **120 m²** Communal Spaces (**115m²**) – Store Room (**5m²**)
- **145 m²** Classrooms (**100m²**) and PC Lab (**45m²**)
- **60 m²** Head (**15m²**) / Meeting Room (**45m²**)

*PhD Candidates, PostDocs, Guest Researchers

Classrooms & Auditoria

Available Seats: 1184 – Total Space: 1370 m²

Exclusive

2 Classrooms (A2-2, A2-3) 42 seats – 50 m²

- ▣ video projectors
- ▣ Interactive White Board (IWB)

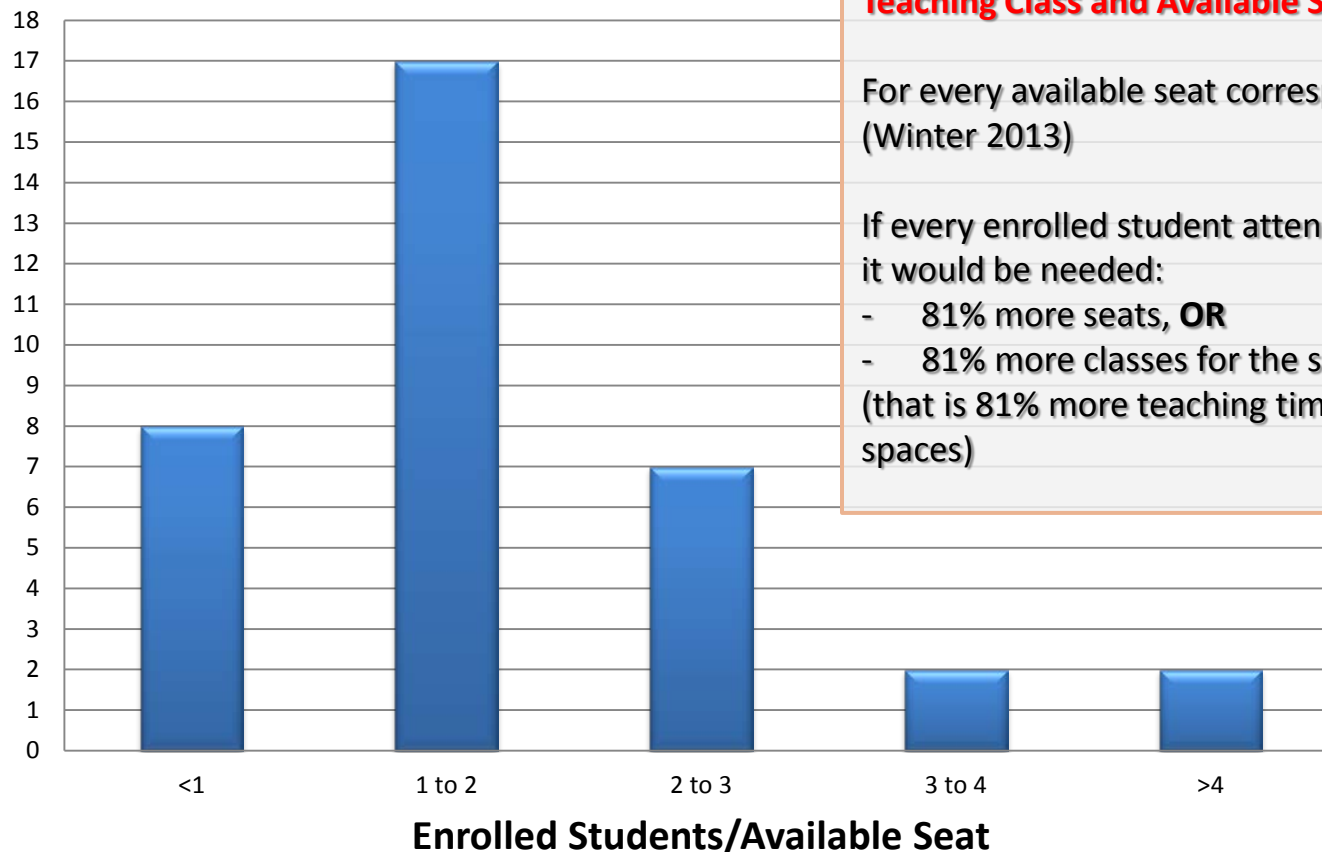
Non-exclusive

- ▣ **6 classrooms** (avg. 75 seats / 90m²)
- ▣ **2 auditoria** 150 seats/190m² with video projectors
- ▣ **1 auditorium** 300 seats/350m²

Seats Availability

Winter Semester 2013 – Computer Courses not Included

Classes: 36 (Courses: 29)



AVERAGE 1,81 Enrolled Students PER Teaching Class and Available Seat

For every available seat correspond 1,81 enrolled students (Winter 2013)

If every enrolled student attended lectures, it would be needed:

- 81% more seats, **OR**
- 81% more classes for the same number of courses (that is 81% more teaching time and use of the available spaces)

PC Laboratories

Available PCs: 54 – Total PC Lab Space: 125m²

- **Inter Departmental Computer Laboratory (IDCL) 45 m² - 16 PCs:**
 - Windows 7 (2010),
 - 1 Photocopier/Network Printer (2006),
 - 1 Video Projector (2003),
 - 1 IWB (podium) 19'' (2013)
- **PC Lab of the Faculty of Social Science**
 - **Ground Floor 34m² - 14 PCs :**
 - Windows XP (2007),
 - 1 Video Projector (2007),
 - 1 Network Printer (2003)
 - **Floor 46m² - 24 PCs :**
 - Windows XP (2007),
 - 1 IWB (podium) 15'',
 - 1 Video Projector (2007),
 - 1 Network Printer (2006)



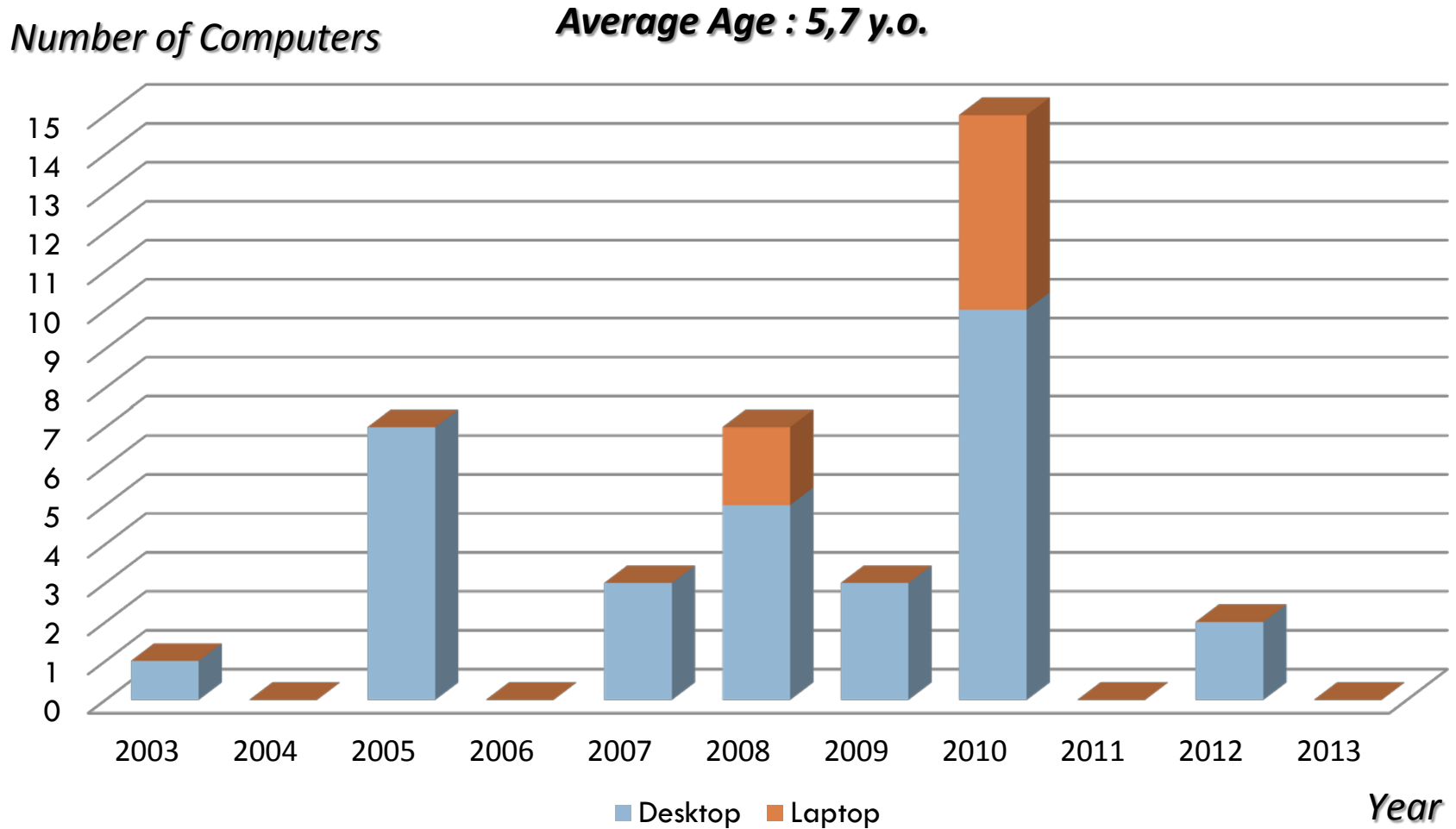
PC Lab Indices

Winter Semester 2013

- **28** Enrolled Users in all courses/Lab PC
- **6,9** Students Enrolled in Computer Courses/Lab PC
- **4,9** Students Enrolled in the Compulsory Computer Course PER Teaching Seat (PC) AND Class*

*The Course has 3 Classes

Personnel's Computers



Communal Resources

- Photocopiers/Network Printers : **6** (*avg. age: 6 y.o.*)
- Laptops: **2** (*avg. age: 5 y.o.*)
- Projectors: **2** (*avg. age: 7.5 y.o.*)
- Web Server : **1** (2008)
- FTP Server: **1** (2003)
- Teleconference Systems: **2** (2003, 2013)

Digital and Web Services

Central Services

- **StudentsWeb / ClassWeb** (*UoC*)
- **Integrated Services for Textbooks and Students IDs** (*Ministry of Education*)
- **Teaching Evaluation System** (*UoC*)
- **Email** (*UoC*)
- **LDAP** (*UoC personalized services: vpn, wireless access, authentication etc*)

Digital and Web Services

Local Services

- Department's web page (Drupal):
<http://economics.soc.uoc.gr>
- Personal Web Pages (Wordpress)
<http://economics.soc.uoc.gr/personal>
- Working Papers (RePEc):
<http://economics.soc.uoc.gr/wpa>
- E-Learning:
<http://www.soc.uoc.gr/moodle>
- Rooms Booking System:
<http://www.soc.uoc.gr/mrbs>
- FTP Server: <ftp://ftp.soc.uoc.gr>
- Asset Management:
<http://www.soc.uoc.gr/glpi>
- Web surveys
<http://www.soc.uoc.gr/limesurvey>
- Phone Surveys
[Asterisk & Microsoft Sharepoint](#)
- Streaming /Web Casting Facilities

Digital and Web Services

Future Development

Virtual Labs:

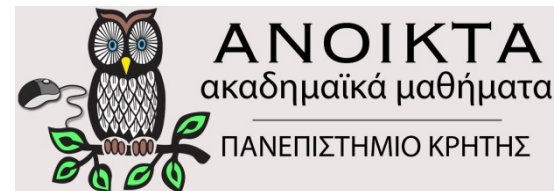
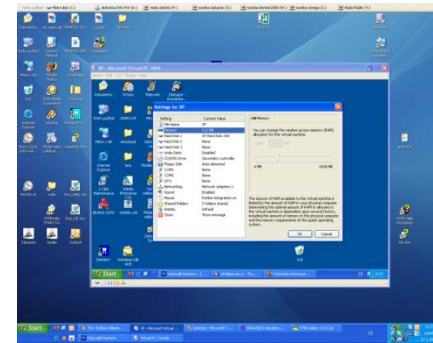
<http://www.openstack.org/>

Cloud Services:

<http://owncloud.org/>

Open Courses:

<https://opencourses.uoc.gr/>





Thank you
for your
attention!